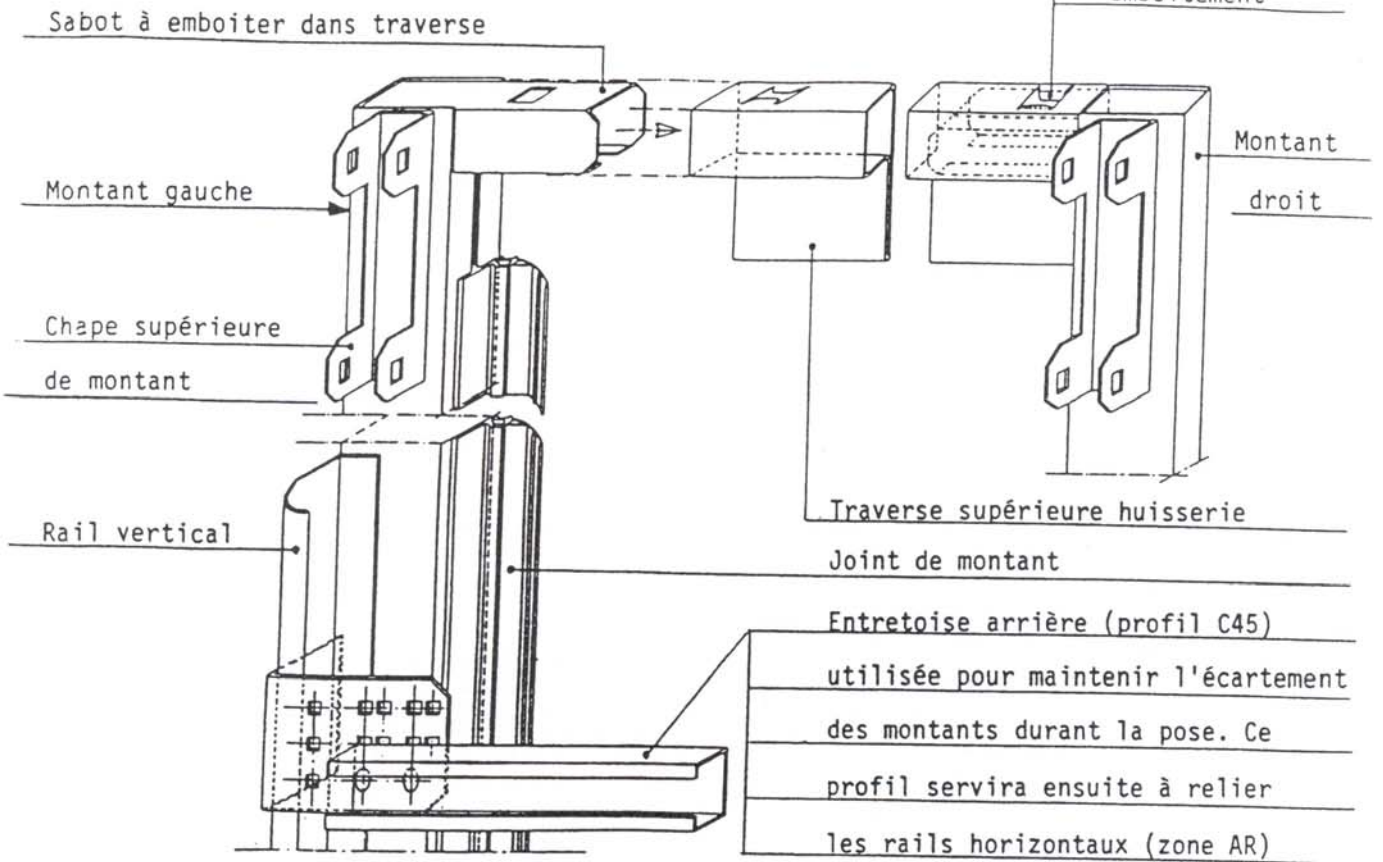


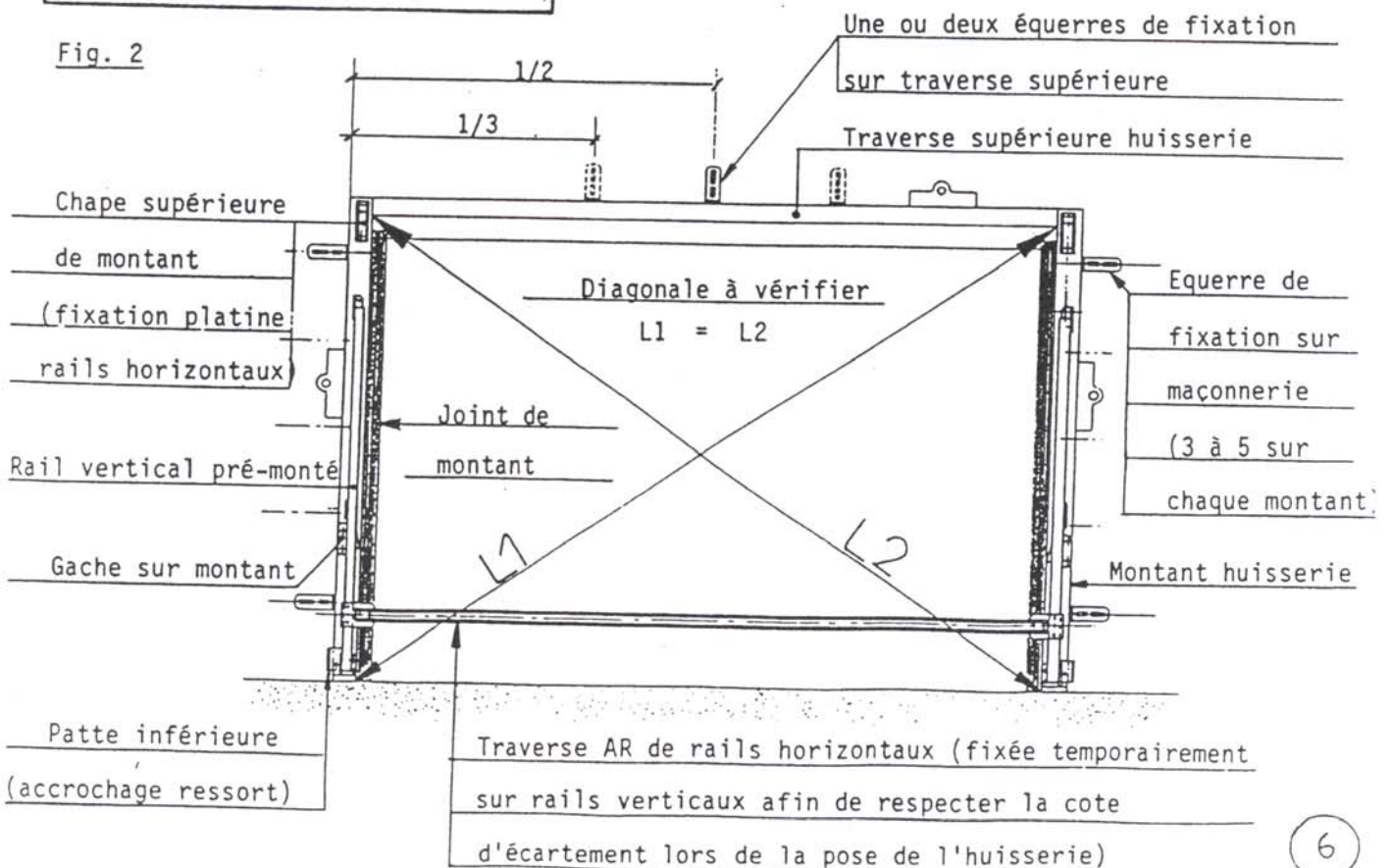
**ASSEMBLAGE HUISSERIE**

Fig. 1



**FIXATION HUISSERIE ET CONTROLE**

Fig. 2



PORTE SYMPHONIE PRE-MONTEE (Configuration des éléments supérieurs en position transport)

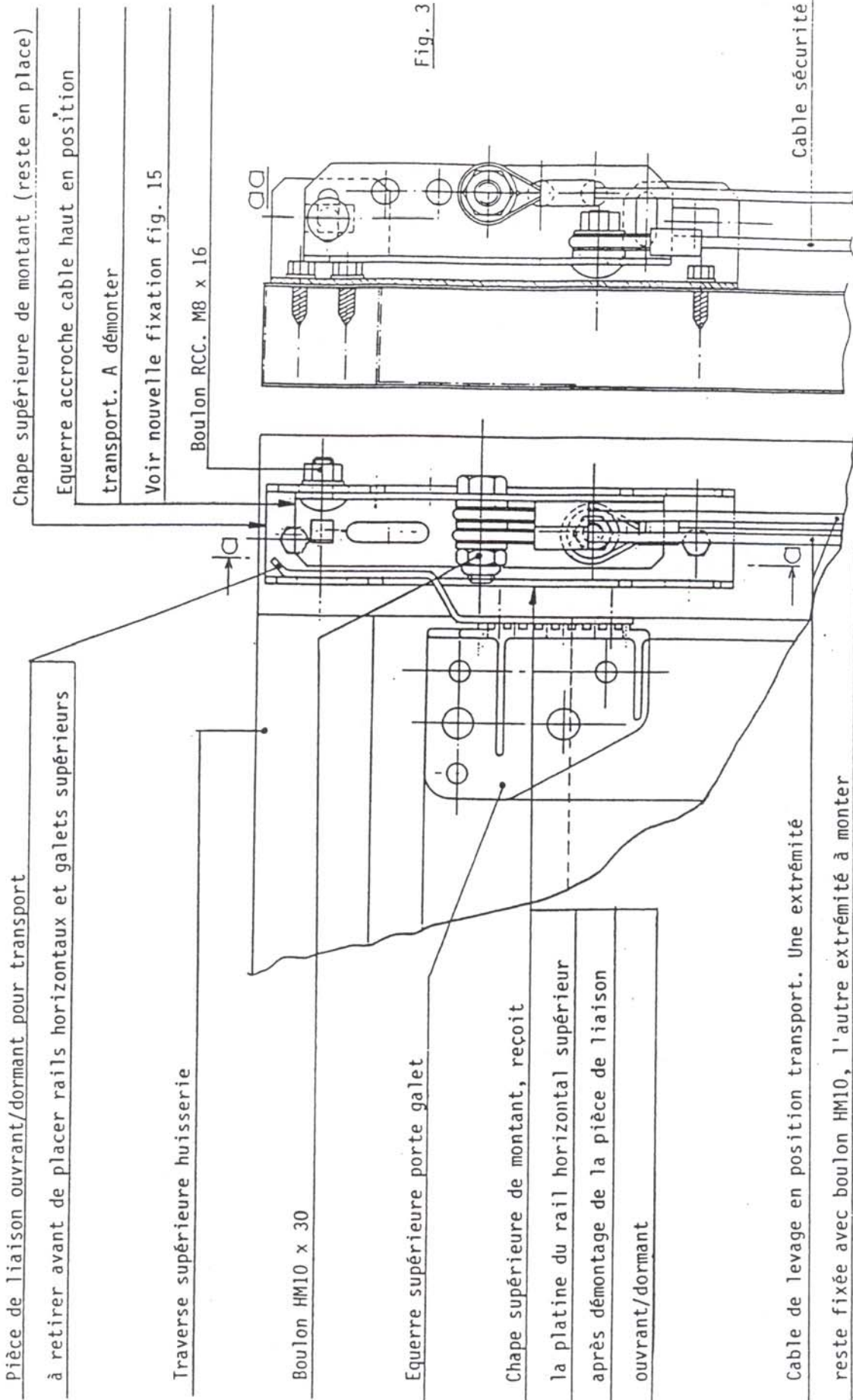
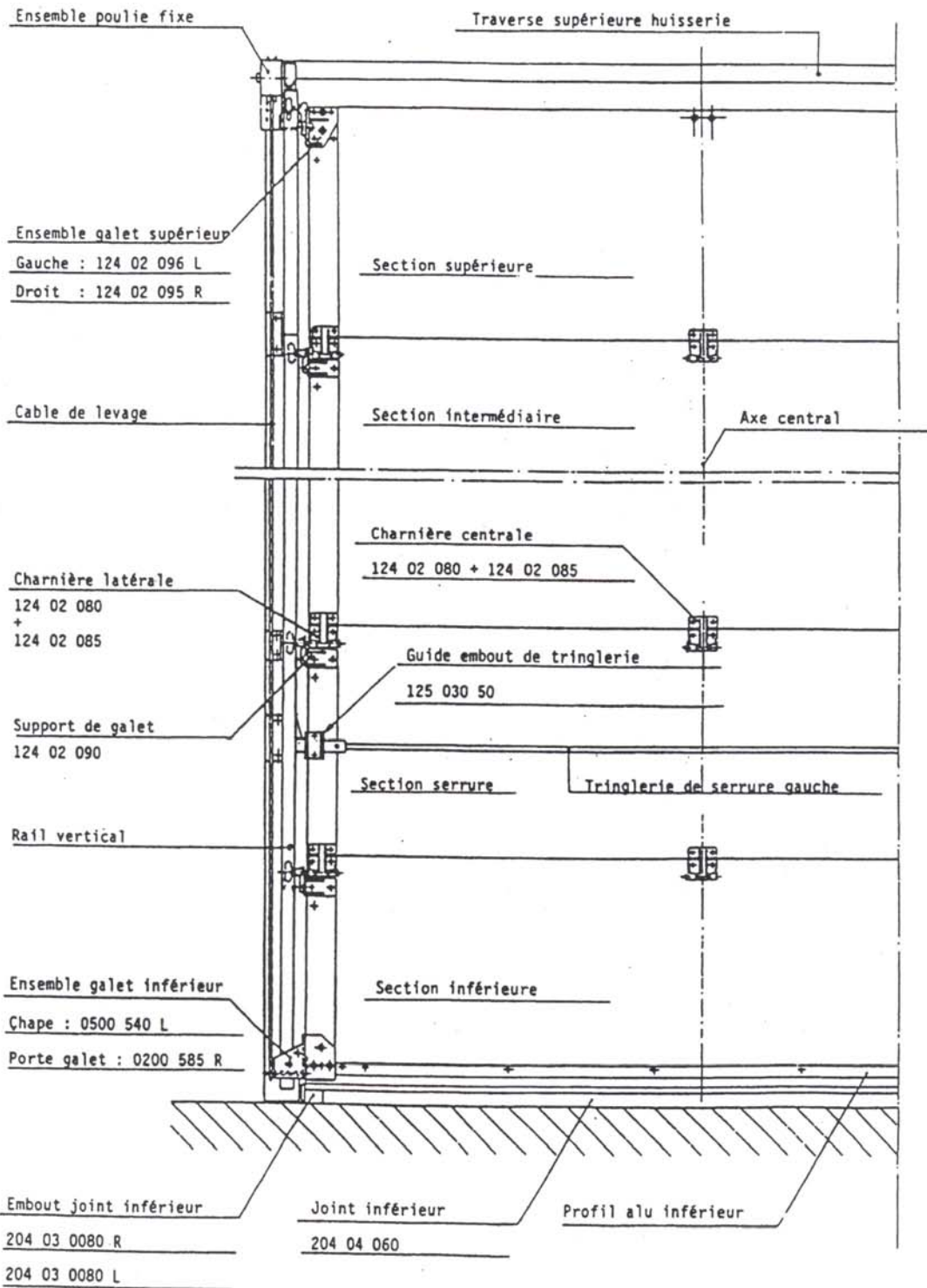


Fig. 3

Cable de levage en position transport. Une extrémité reste fixée avec boulon HM10, l'autre extrémité à monter sur axe de l'accroche cable bas solidaire de l'ouvrant (voir fig. 14A, 14B)





PORTES EN KIT - ATTENTION

Les pattes de galets inférieurs  
sont inversées 02 00 585 R ---> à gauche  
02 00 580 L ---> à droite



COUPE VERTICALE

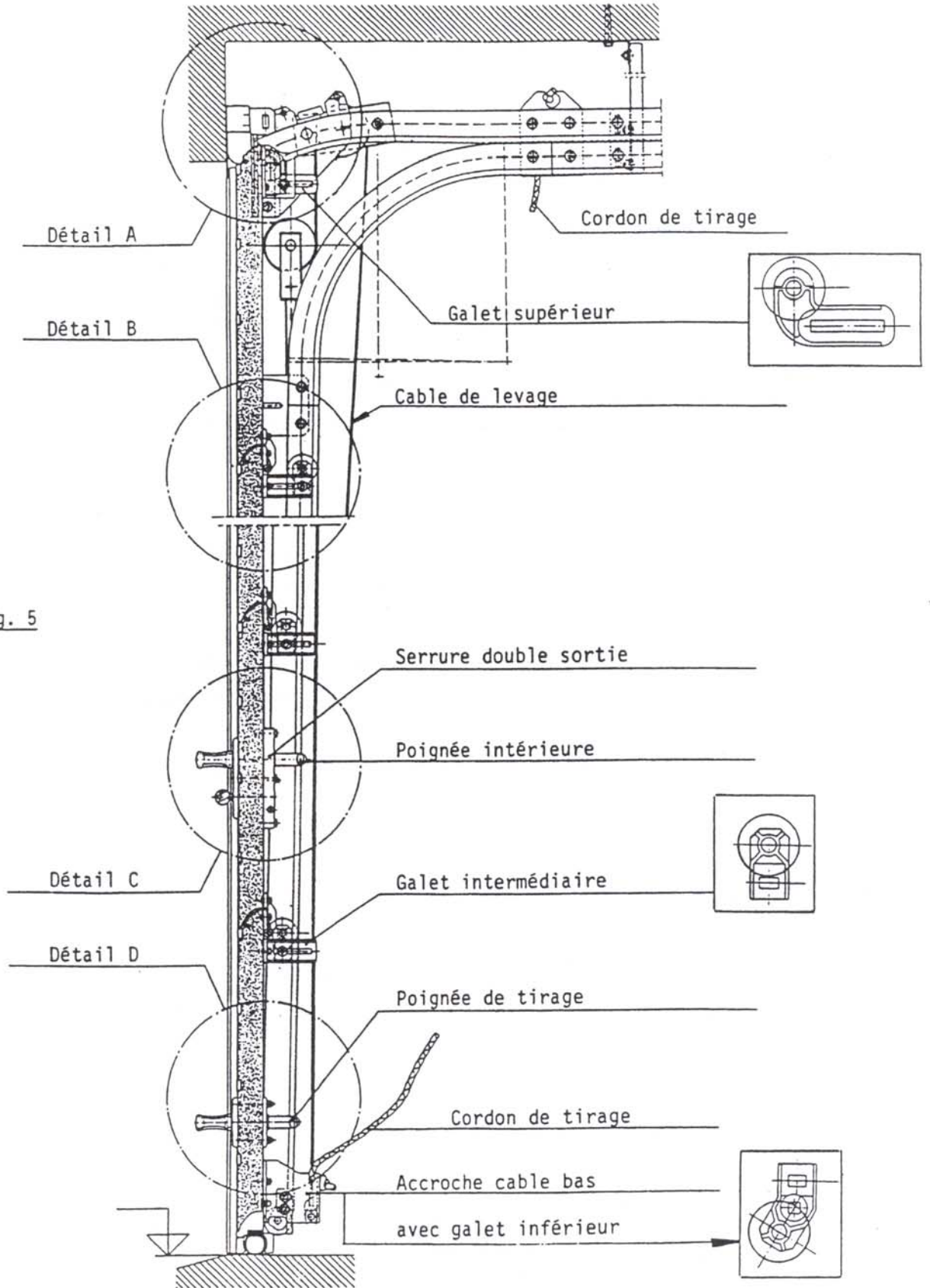


Fig. 5



**Montage des rails horizontaux**  
(coupe verticale)

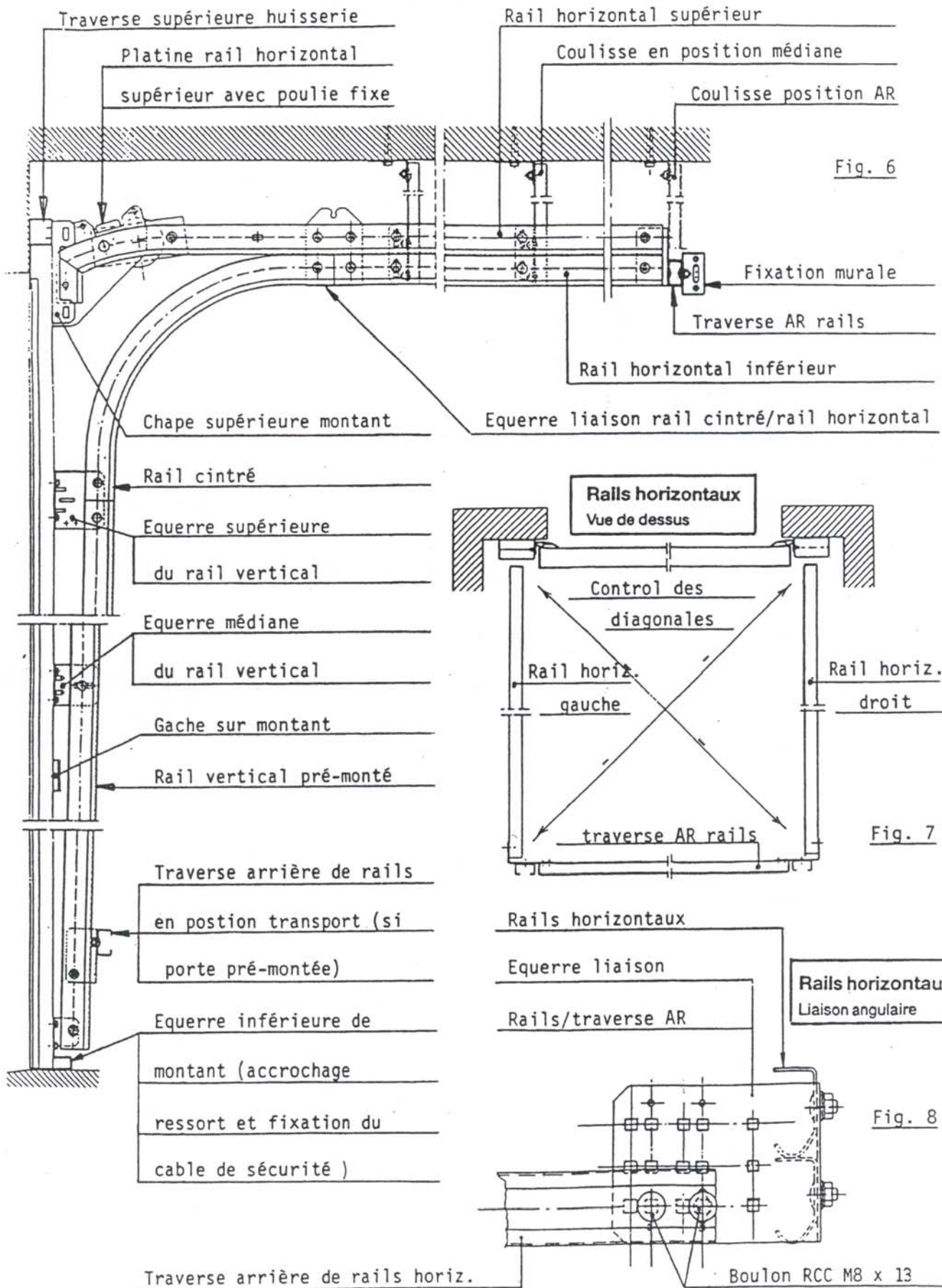


Fig. 6

Fig. 7

Fig. 8

Partie supérieure

Détails A

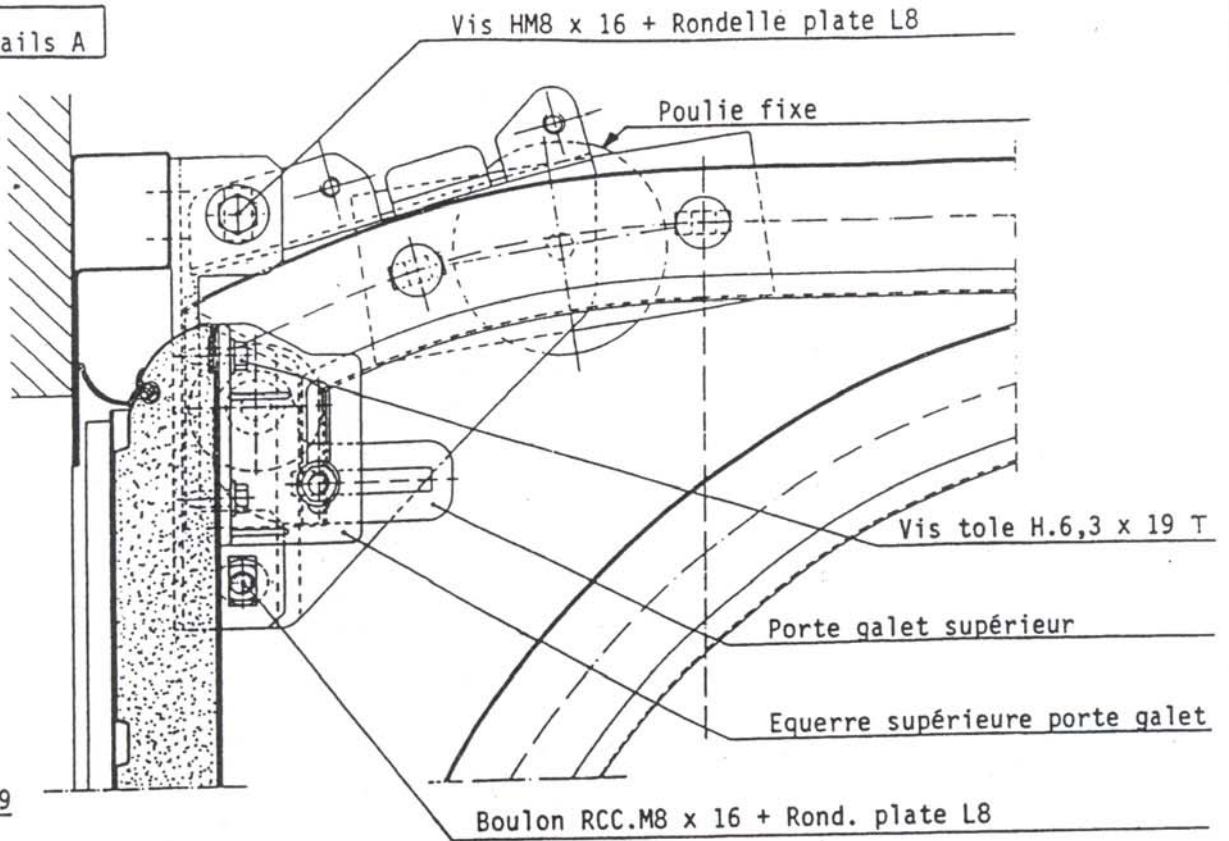


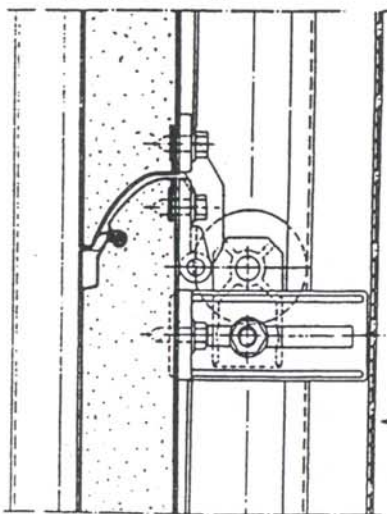
Fig.9



N.B. : Montage de la charnière : la flèche apparaissant en relief sur charnière toujours dirigée vers le haut.

Roulette et panneau

Détails B



Vue A

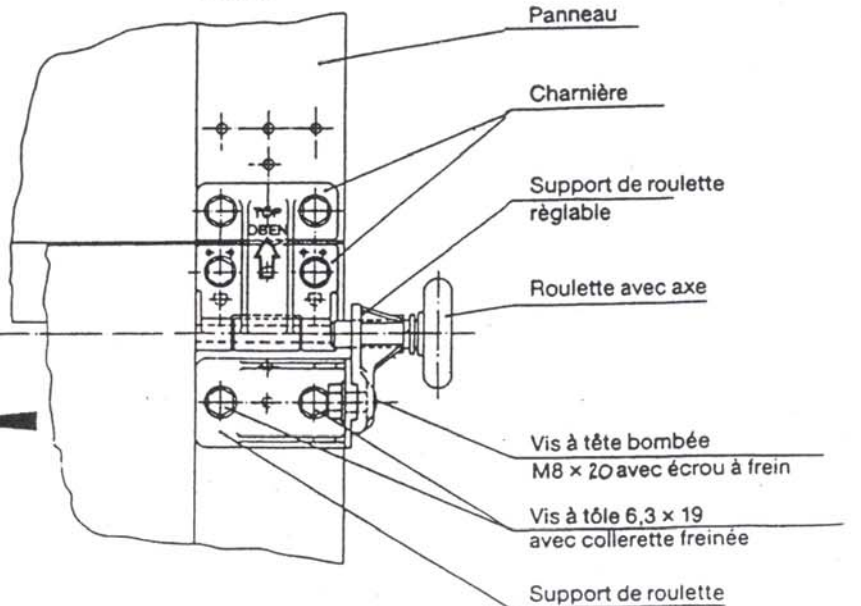
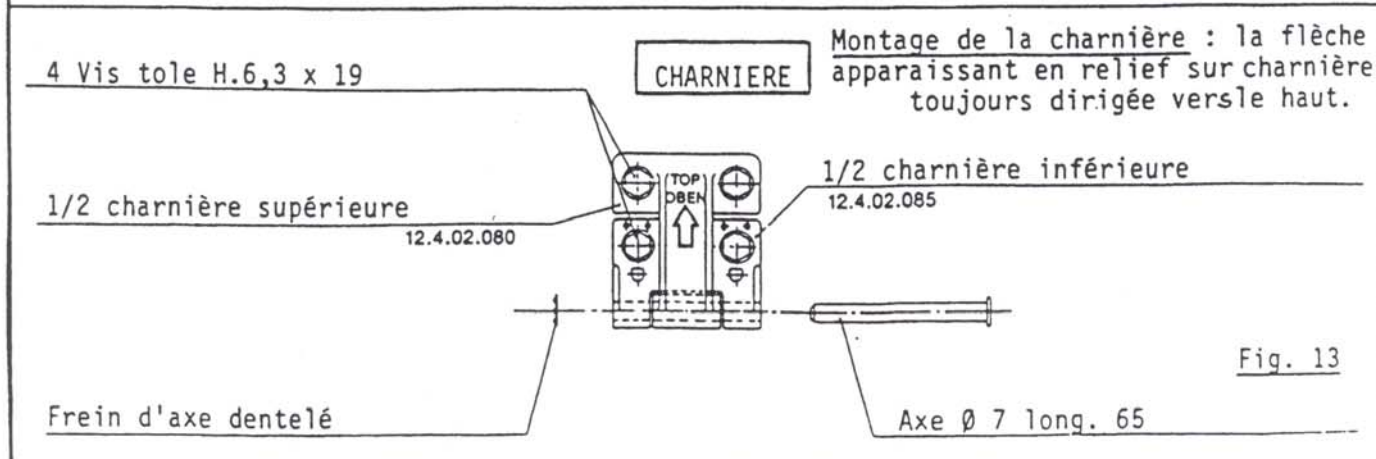
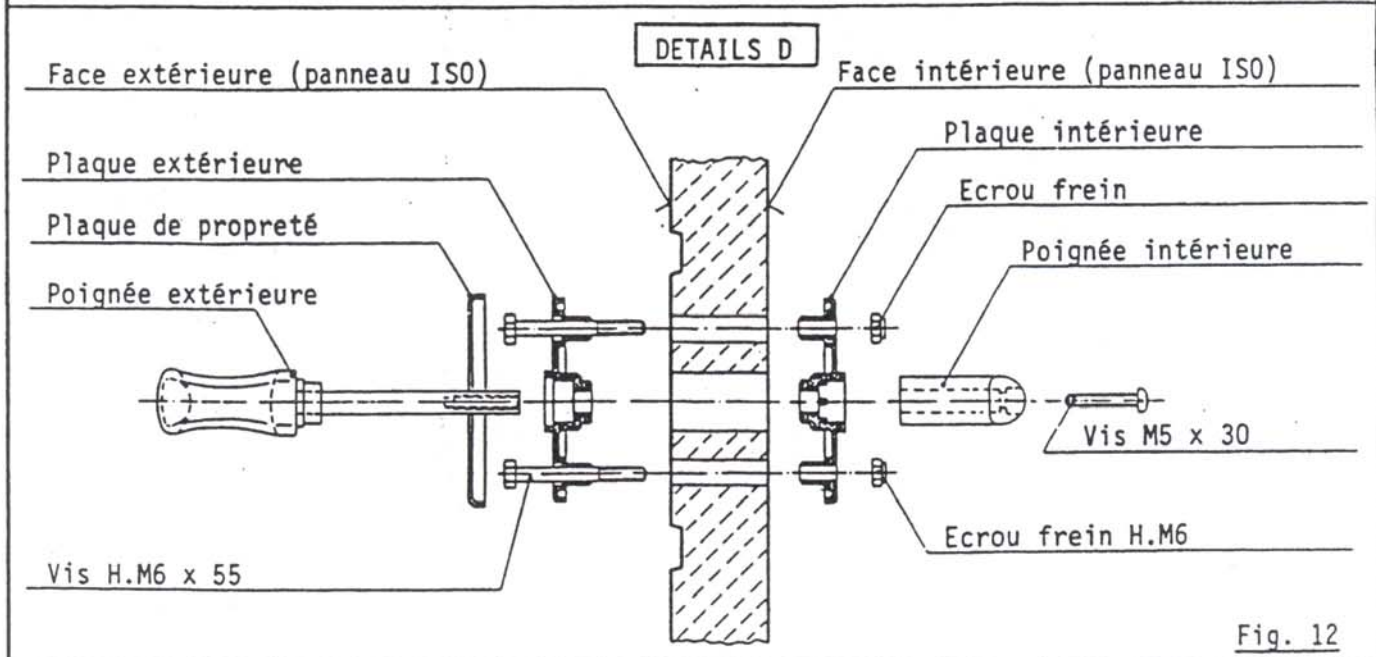
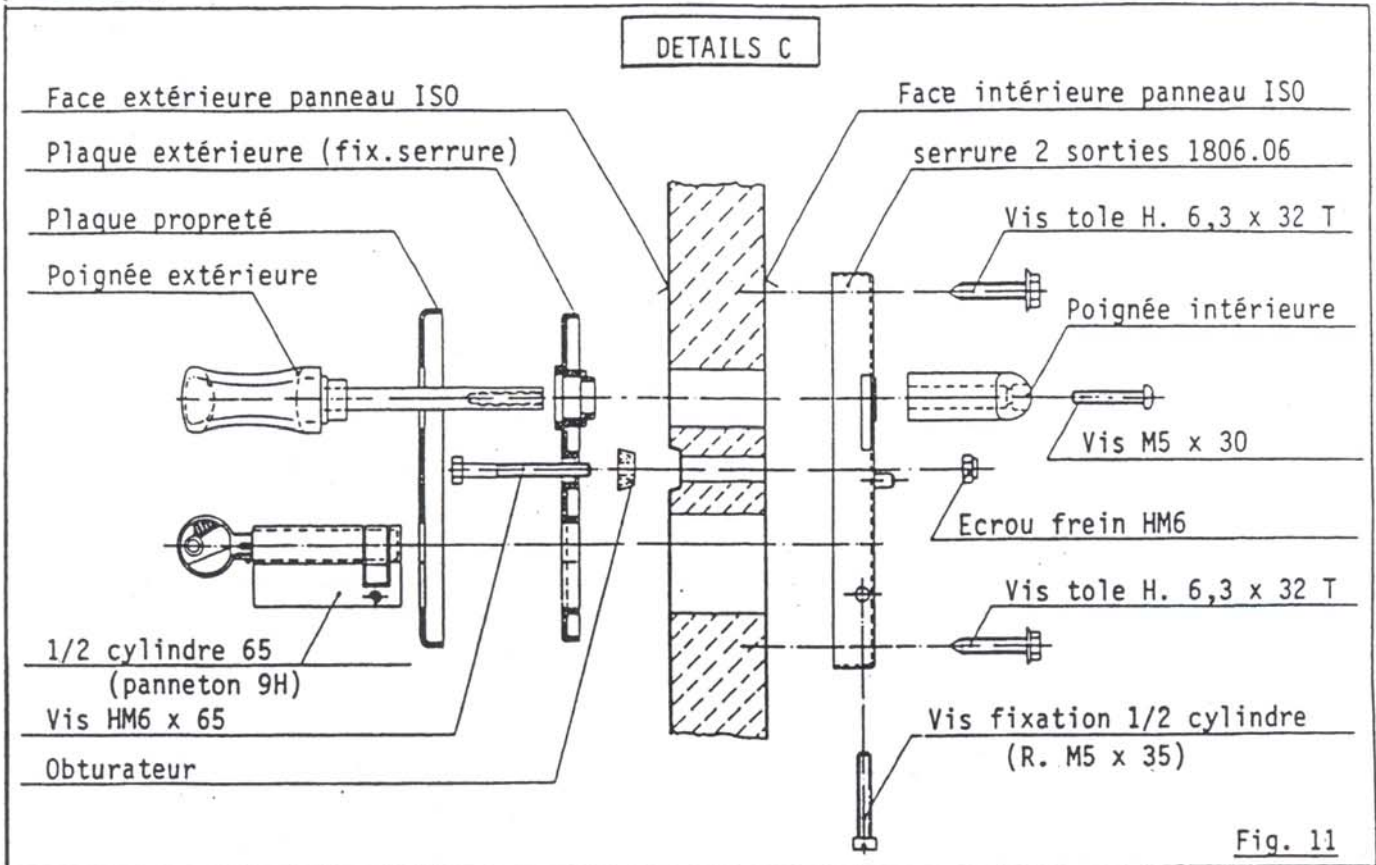
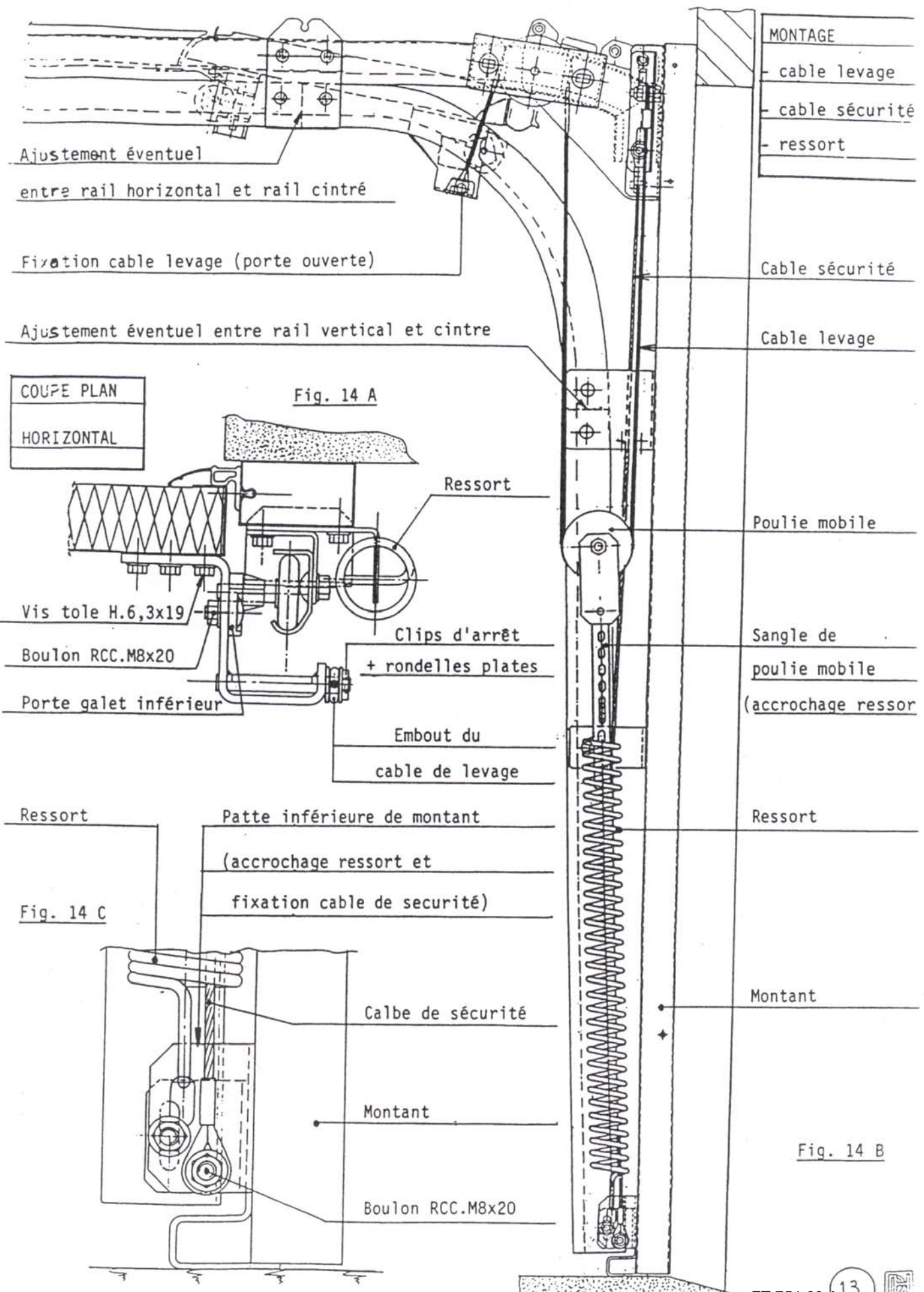


Fig. 10







MONTAGE
- cable levage
- cable sécurité
- ressort

Ajustement éventuel  
entre rail horizontal et rail cintré

Fixation cable levage (porte ouverte)

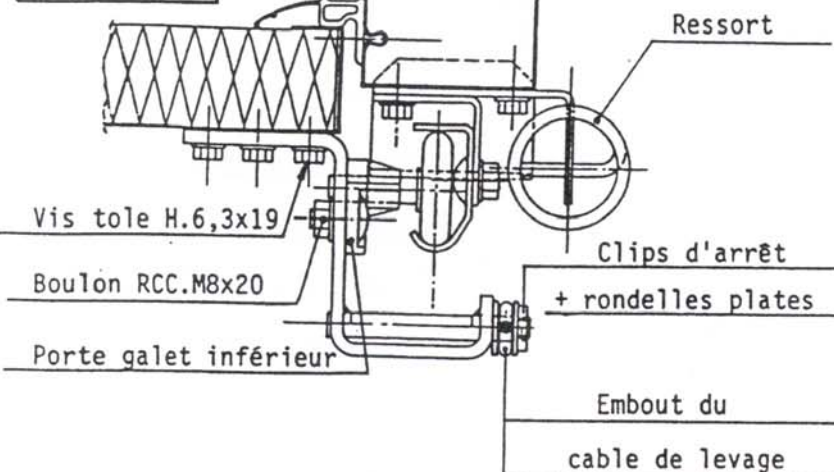
Ajustement éventuel entre rail vertical et cintré

Cable sécurité

Cable levage

COUPE PLAN  
HORIZONTAL

Fig. 14 A



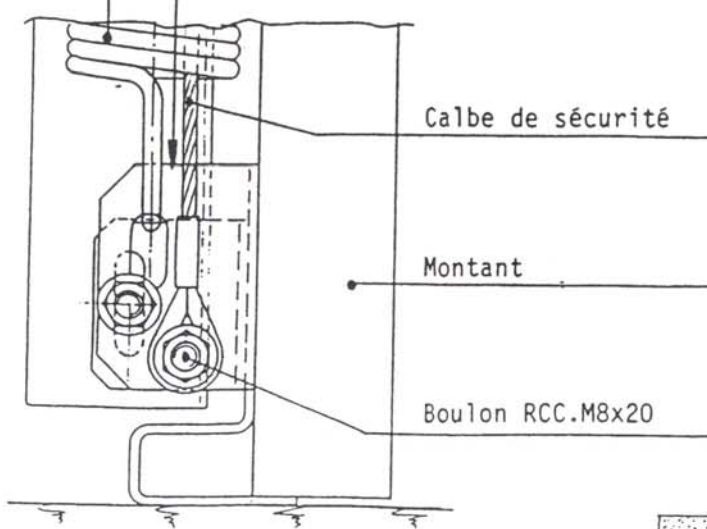
Poulie mobile

Sangle de  
poulie mobile  
(accrochage ressort)

Ressort  
Patte inférieure de montant  
(accrochage ressort et  
fixation cable de securité)

Ressort

Fig. 14 C



Montant

Fig. 14 B



MONTAGE CABLES LEVAGE ET CABLE SECURITE

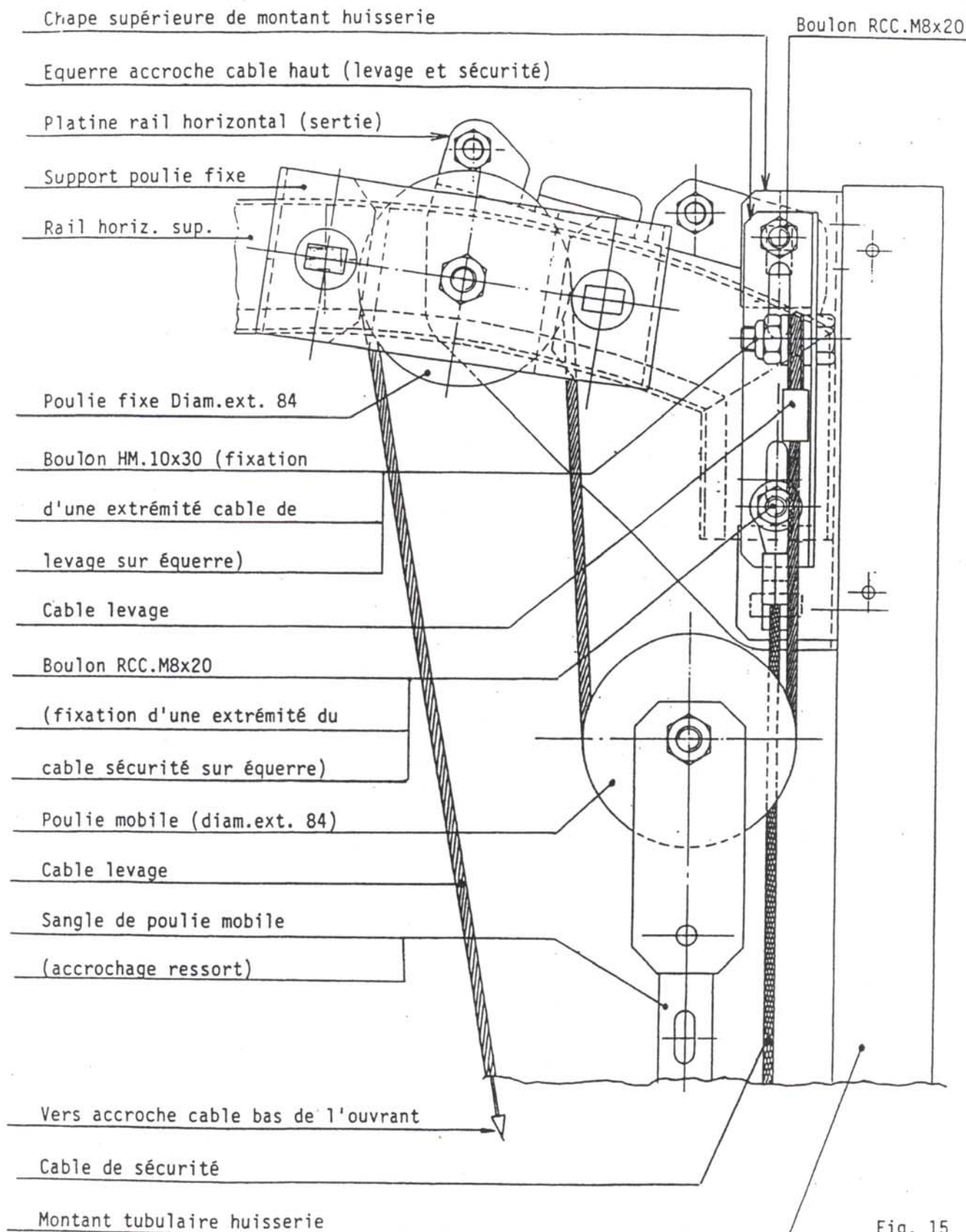


Fig. 15

POSE DES EMBOUTS
DU JOINT INFÉRIEUR

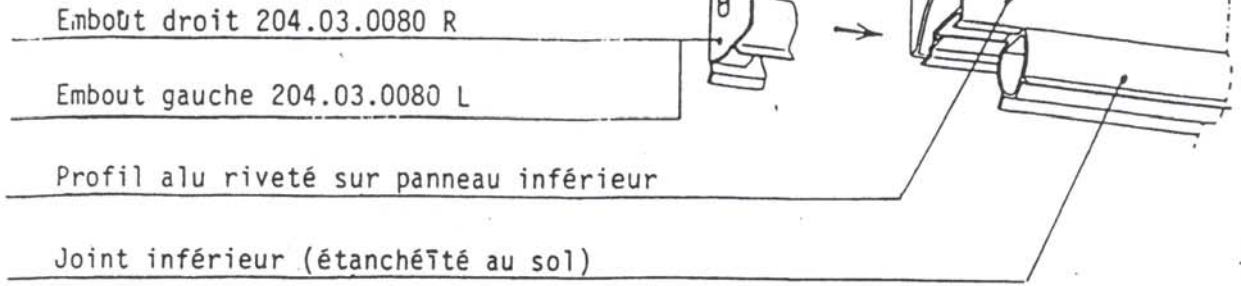


Fig. 16

POSE DU JOINT
SUPÉRIEUR
DE PANNEAU

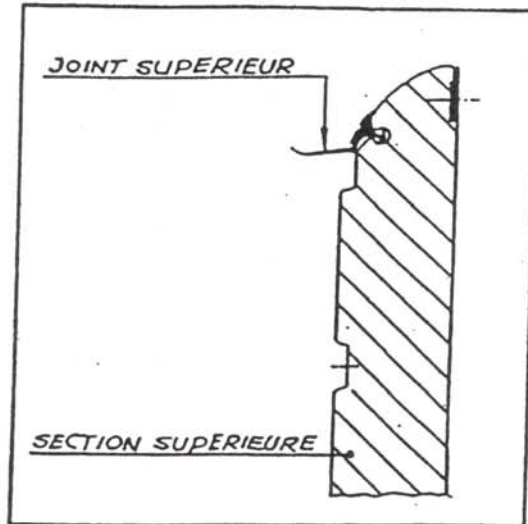
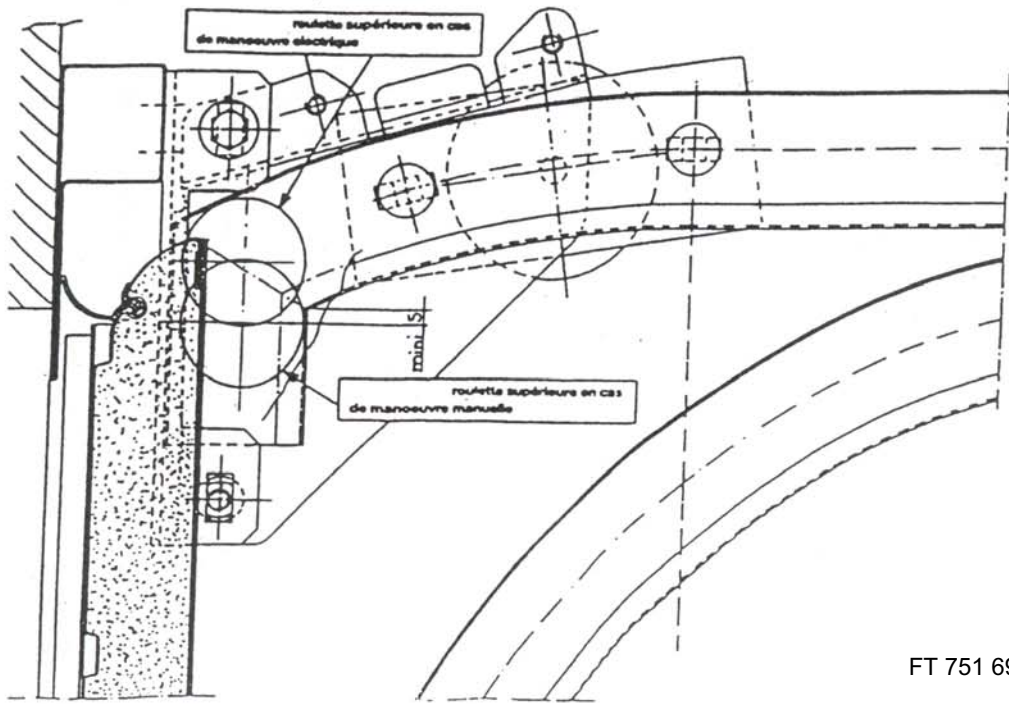


Fig. 17

REGLAGES DE LA ROULETTE SUPÉRIEURE
------------------------------------

Fig. 18



Suspente simple

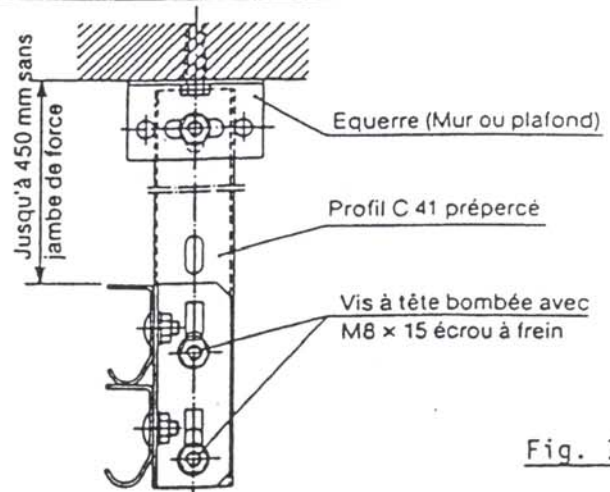


Fig. 19

Suspente supérieure à 450 mm

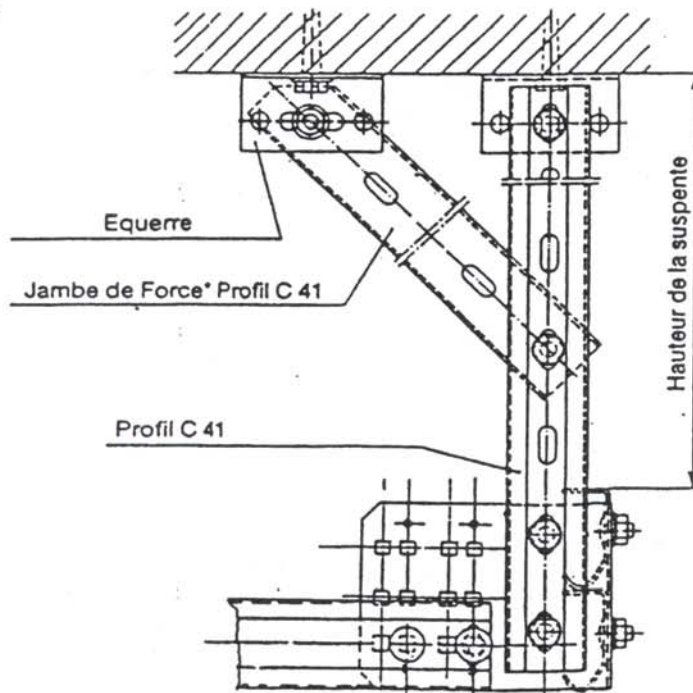


Fig. 20

Fixation murale/plafond

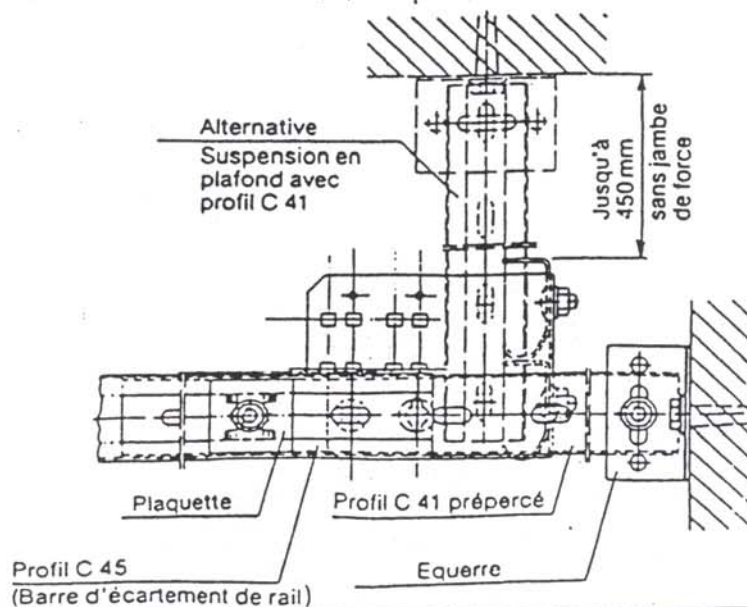
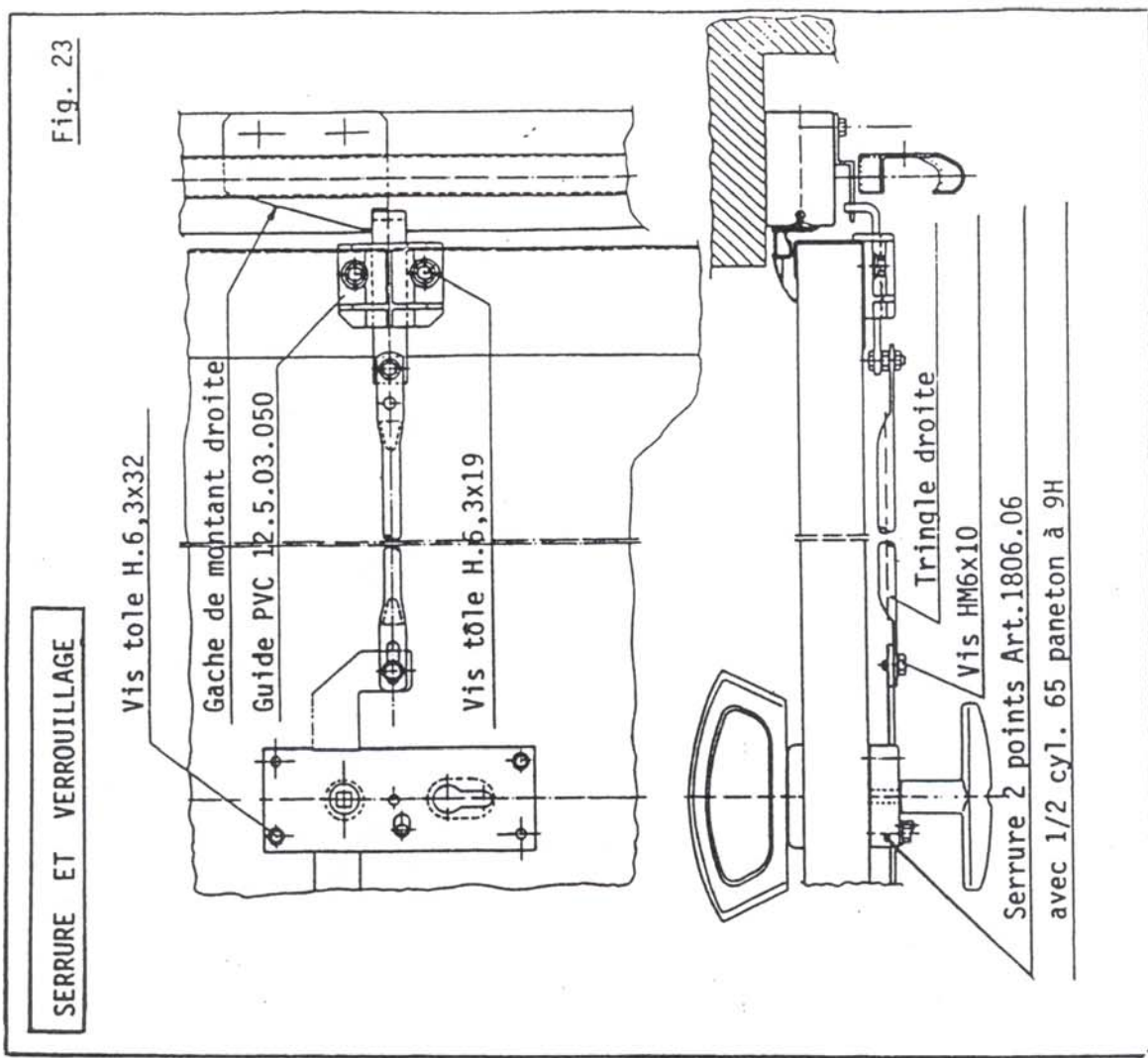
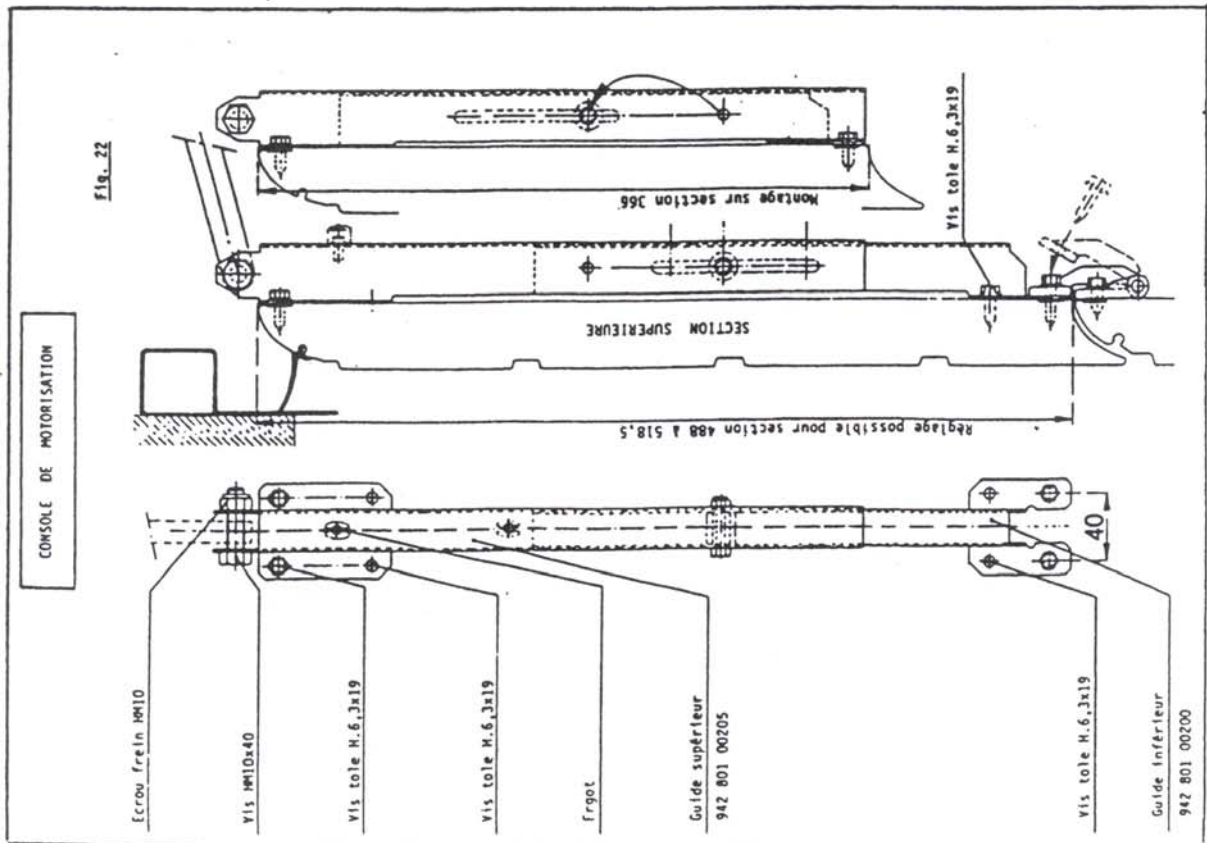
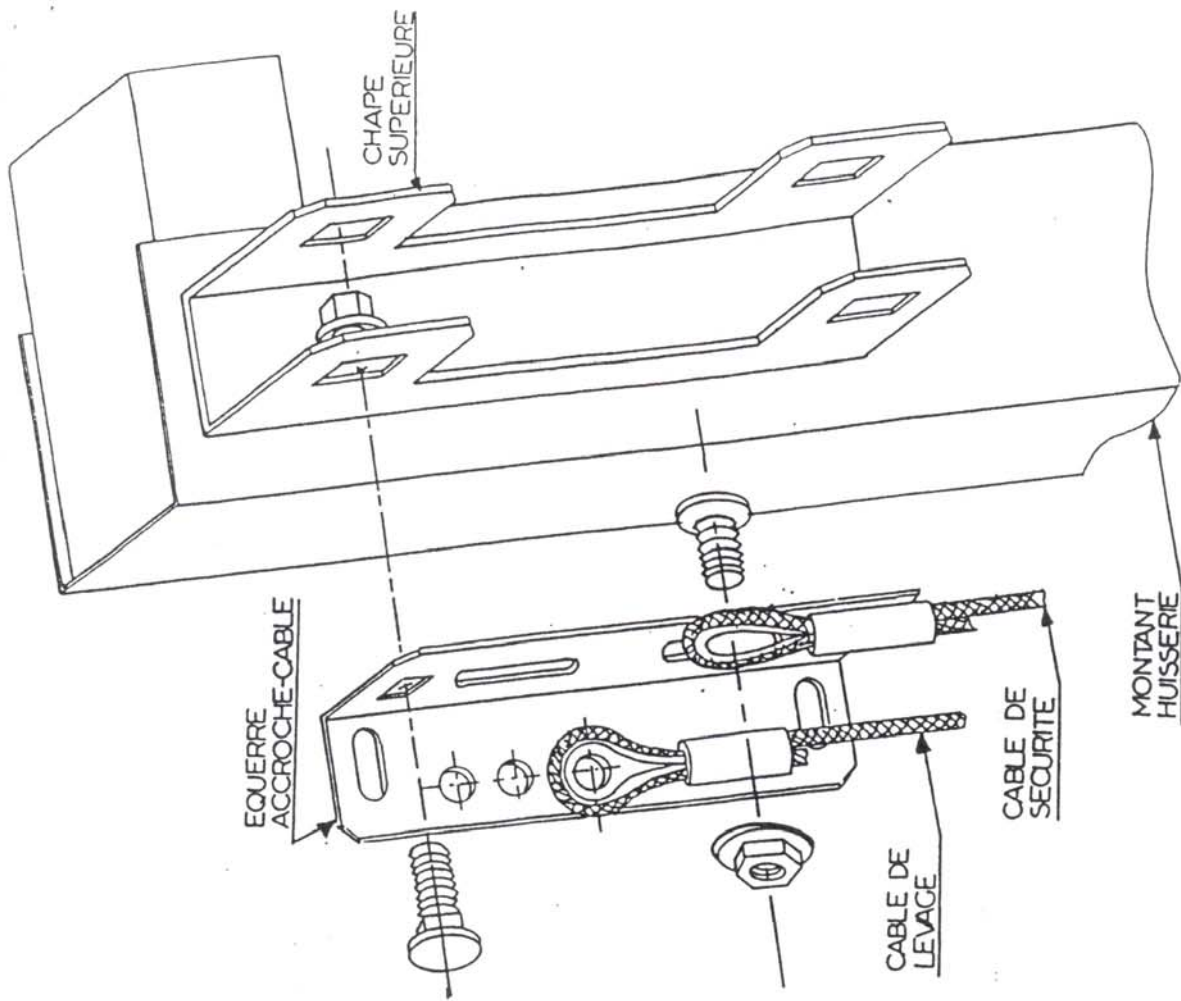


Fig. 21

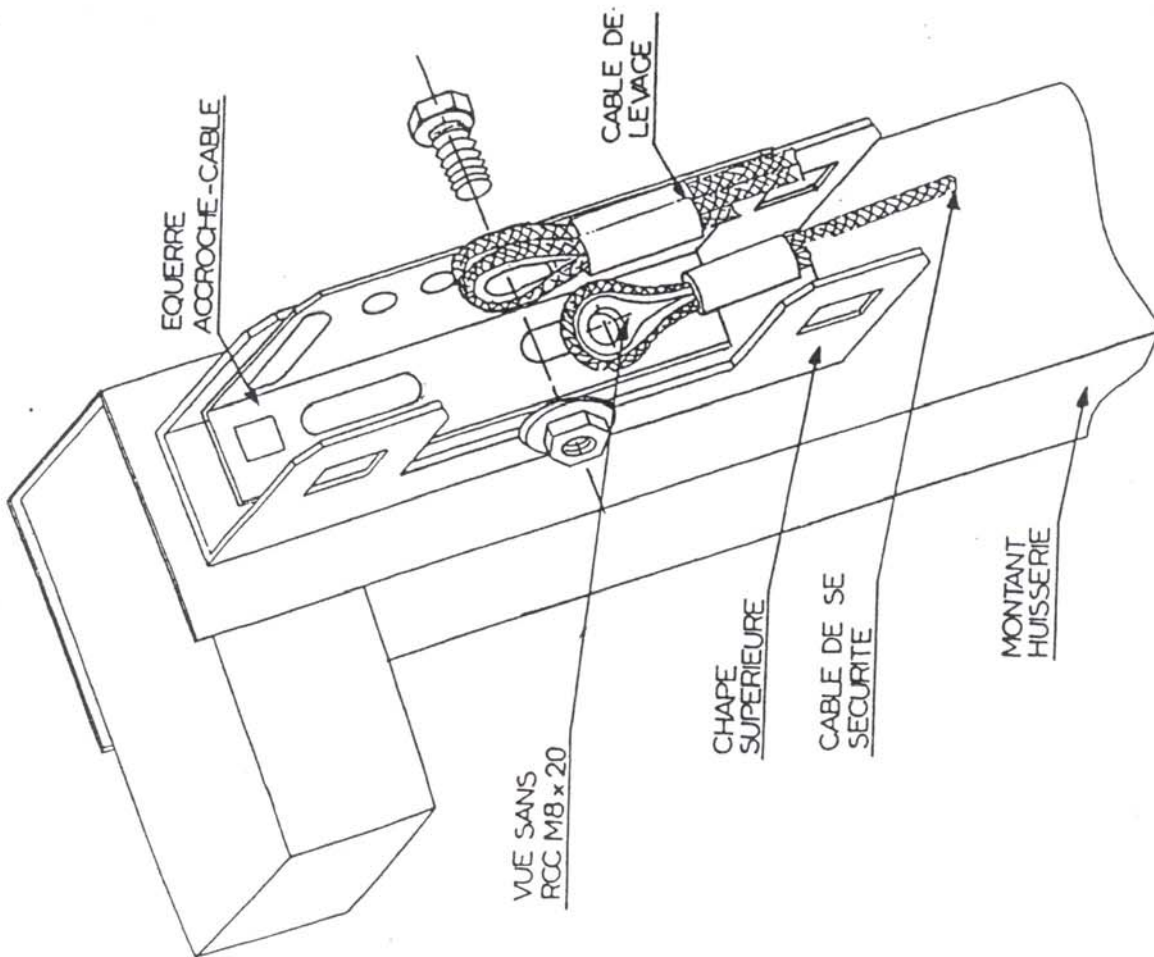






POSITION DE L'EQUERRE ACCROCHE CABLE HAUT  
LORS DE LA MISE EN PLACE DE LA PORTE

Fig. 24 B



EQUERRE ACCROCHE-CABLE HAUT EN  
POSITION TRANSPORT

Fig. 24 A