



L'esprit coupe-feu

RANGE DATA CENTER

DEDICATED SOLUTIONS FOR
ALL YOUR SITES

PREMIO swing door **FMAX**
swing door ~~VA ET VIENT~~
~~door~~

www.novoferm.fr



novoferm
LUTERMAX

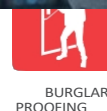
L'esprit coupe-feu

NOVOFERM LUTERMAX YOUR DATA CENTRE PARTNER

In its simplest form, a data centre is a physical facility used by companies to house strategic applications and data. The design of a data centre is based on a network of processing and storage resources capable of distributing shared applications and data.

To support the hardware and software, the data centre components need to be based on a robust infrastructure.

Novoferm Lutermax fire-resistant doors contribute to this protection. They are distinguished by their diversity technical in combining fire, soundproofing, burglar-proofing and dimensional performance.





L'esprit coupe-feu



NOVOFORM LUTERMAX HAS OVER 65 YEARS' EXPERIENCE

Customer proximity, dedicated solutions, analysis of specific needs, professional adaptability and tailor-made solutions.

With ISO 9001 certification, Novoform guarantees the conformity and quality of its products, with CE marked internal and external doors.

The doors have fire classification reports and acoustic tests attesting to their performance, and also comply with the DAS NF S 61-937 standard.

All the doors Novoform Lutermax comply with current legislation and the requirements for emergency exits, in accordance with EN 1125 and EN 179.



**Réussir Ensemble...
c'est l'affaire de tous**



THE NOVOFERM GROUP : A WORLDWIDE PRESENCE

Novoferm is part of the Sanwa Shutter group, world leader in closures.



THE NOVOFORM GROUP : COMMITTED TO SUSTAINABLE DEVELOPMENT AND ECO- RESPONSIBILITY

It's clear that we need to think about certified environmental protection - with its many advantages - for architects and planners.
for architects and planners.



SUSTAINABLE QUALITY FOR ALL

That's why our detailed overview is not just limited to door-related areas, we also look to the future and keep an eye on technology, but particularly on the environment.

The result: sophisticated, environmentally-friendly products are designed in our development departments **close to the manufacturing facilities** in Brackenheim.



AWARD-WINNING PRODUCTS FROM AN ENVIRONMENTAL POINT OF VIEW

Many of our products are **sustainable** - for example, our multi-purpose steel doors, aluminium/steel tubular frame doors, fire-resistant sliding doors and industrial roller shutter doors.

The environment and our partners benefit from our **certifications**. Architects and planners can integrate these products into the **ecological assessment of buildings over their entire life cycle**.



OUR PARTNERS

Efectis

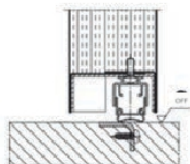
CSTB
le futur en construction


CNPP
Prévention et maîtrise des risques

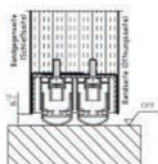
 **effeff**
ASSA ABLOY

 **GROOM**

PREMIO SWING DOOR



RS1 single retractable seal



2 x RS1 double retractable seal

FMAX SWING DOOR



SUPPORTS

- Fitted to a minimum 140 mm masonry wall
- Placostil and Megastil partitions
- Sandwich panel *

DIMENSIONS

- Width up to 3000 mm
- Height up to 3500 mm

LOCKS

- ASSA ABLOY EL560/709 & EL 566/729
- ASSA ABLOY new generation "ONE SYSTEM" More reliable and stronger
- Emergency lock EFF 331 & 332

MISCELLANEOUS

- Oculus up to 460 x 1500 mm
- RS1 & RS1+ automatic skirting board, with anti-passing of USB key
- Acoustics up to 45dB***.

SECURITY

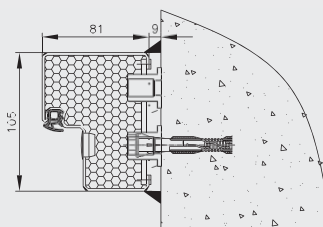
- CR2- CR3 ****

MISCELLANEOUS

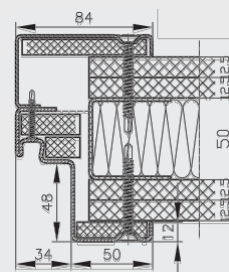
- Stainless steel low protection
- EFF position switch ref: 10405 or others on request

FRAME

- Tubular frame
- Wrap-around tubular frame 2140B



TUBULAR FRAME

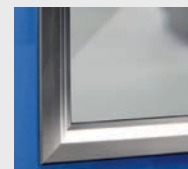


2140B
FRAME

OPTIONS



Steel
profile for
screwing
visible



Elegant cover
strips in
stainless steel

BACK AND FORTH DOOR V05M/V05M2



SUPPORTS

- Metal tubular frame mounted on a masonry wall

DIMENSIONS

- EI30 - 1 door leaf : L 1000 X 2800 mm*
- EI60 - 1 leaf: L 1000 X 2200 mm
- EI30 - 2 leaves: L 2000 X 2800 mm* (2)
- EI60 - 2 leaves: L 2360 X 2520 mm

*With site notice

LINTEL PIVOT

- GROOM GRL 200 (DAS integrated suction pads)

FAUX PIVOT SOL

- DORMA ref. 7475

OCULUS

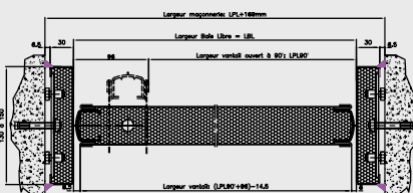
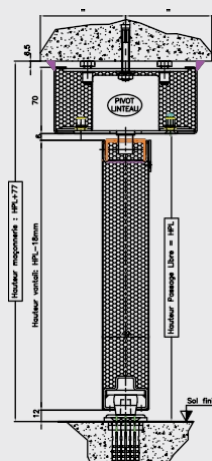
- Circular up to diameter 400 mm
- Rectangular up to 270 x 770 mm
- Other dimensions on request

MISCELLANEOUS

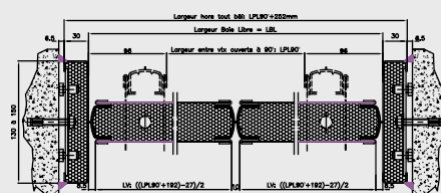
- Stainless steel low protection
- EFF position switch ref: 10405 or others on request

FRAME

- Tubular frame



V05M



V05M2



DESIGN
SAFETY
PERFORMANCE
INNOVATION

Novoferm Lutermox
530, avenue Georges Clémenceau 77000
Vaux-le-Pénit
Tel: 01 64 14 38 00
lutermox@novoferm.fr www.novoferm.fr